

A PROJECT BY



Dwarka Palace

YOUR DREAM HOME...



Dwarka Palace

SMART DESIGN...

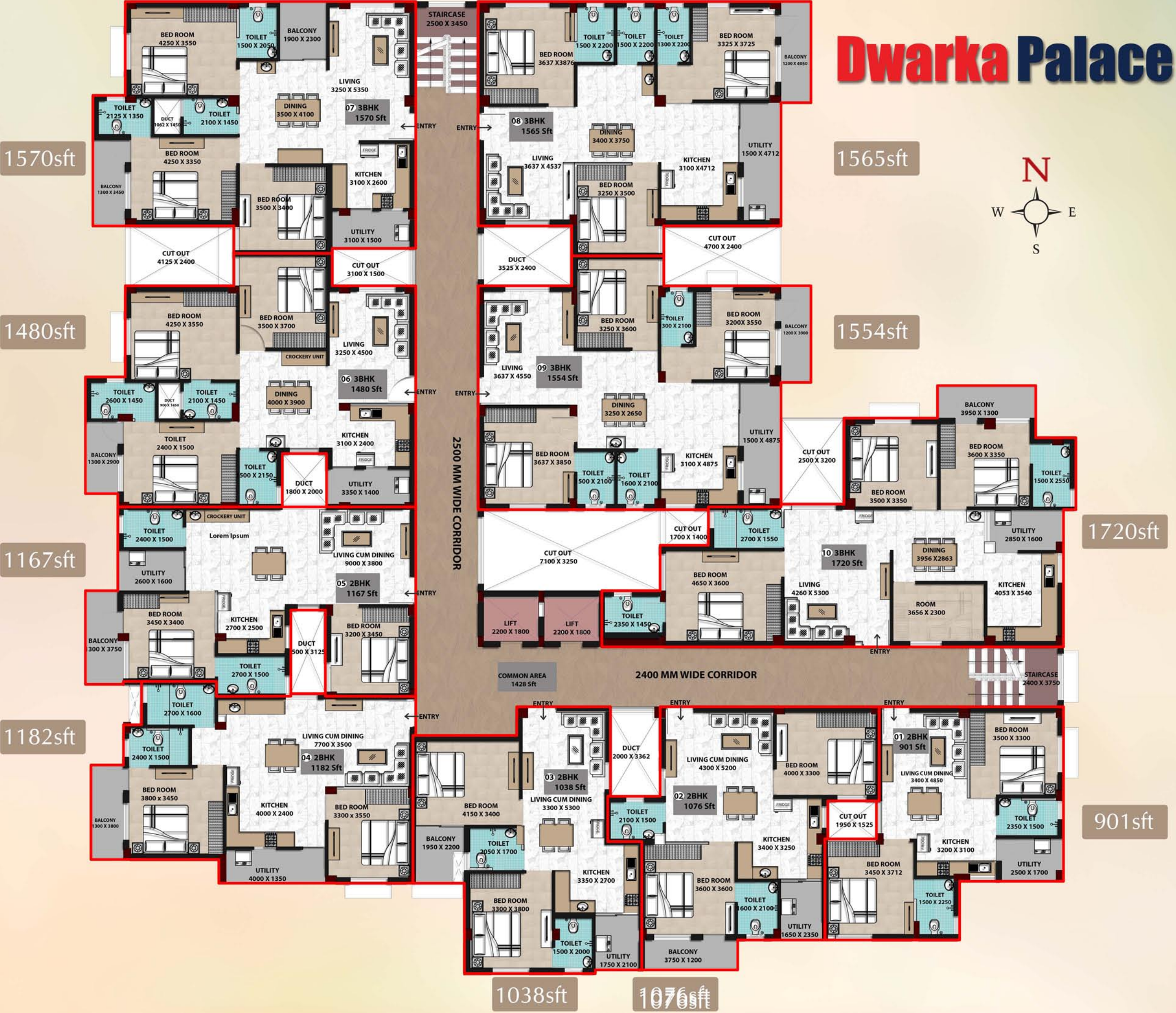
We bring you a fully luxurious grand innovative project is being launched by SILK CITY. This project would redefine modern day, secured living. Welcoming you to a novelty and innovation with great pleasure, we present the master homes, "DWARKA PALACE" where life is at your service. An innovation that will take your standard of living. It brilliantly infuses the features of a premium home and the experience of amenities and services.



Well planned
spaces....



TYPICAL FLOOR PLAN



Dwarka Palace

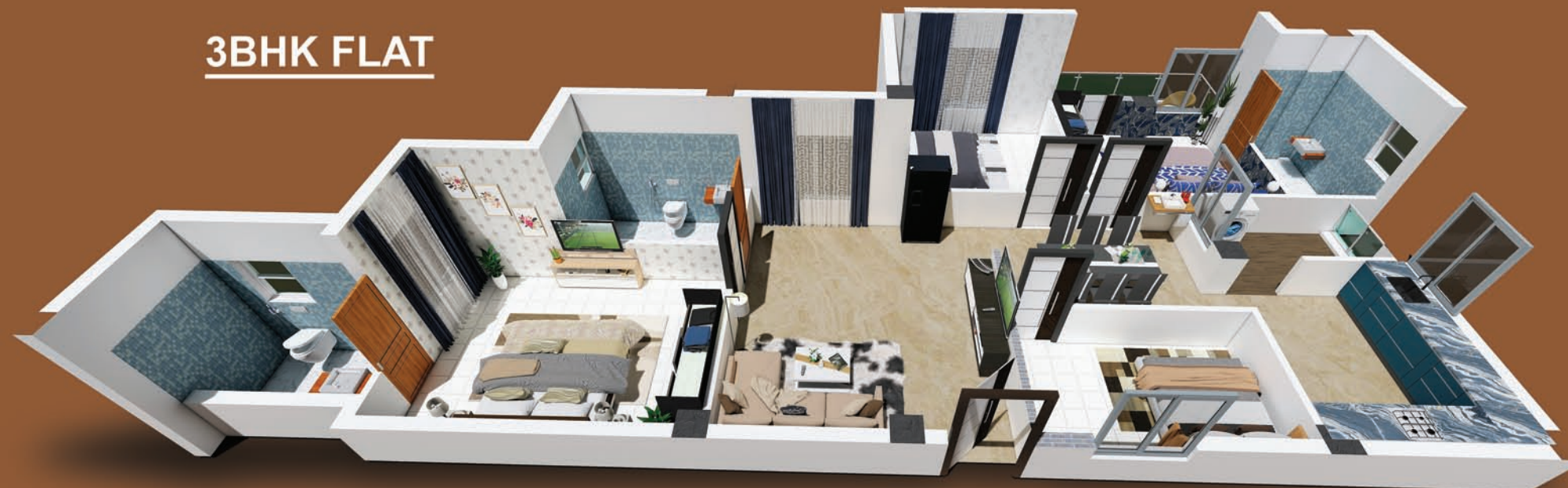
ISOMETRIC VIEWS



2BHK FLAT



3BHK FLAT



PAYMENT SCHEDULE

INITIAL BOOKING AMOUNT	10%
1st Installment within 15 days of Allotment & Agreement	15%
2nd Installment on completion of Stilt Floor Roof Casting	15%
3rd Installment on completion of 1st Roof Casting	15%
4th Installment on completion of 2nd Roof Casting	15%
5th Installment on completion of 3rd Roof Casting	15%
6th Installment on completion of 4th Roof Casting	10%
7th Installment on seven days before registration & Possession	5%

SPECIFICATIONS

Structure	RCC framed Structure.
Super Structure	Brick Masonry Walls
Plastering	Cement Mortar
Main Doors	Decorative Door for Entrance . Internal Doors are flush doors, shutters painted with enamel paint.
Windows	Powder coated Aluminium windows with powder coated Aluminium hardware.
Flooring	Ceramic Tiles / vitrified tiles will be provided.
Electrical	Concealed copper wiring with necessary points. Provisions for modern appliances. AC provision in master Bedroom, Geyser point in one toilet, T.V. & Telephone Point in hall & Master Bedroom.
Toilets	Glazed / Ceramic tiles dado up to 7' height. All sanitaryware is of white colour with standard C.P. Fittings are provided in all toilets.
Kitchen	Granite Platform along with S.S sink will be provided.
Painting	Acrylic emulsion paints for external walls , for Internal wall in putty finish with emulsion paints.
Plumbing & Sanitary	PVC Pipes of standard make is provided for both plumbing & sanitary.
Wardrobes	Space will be provided for wardrobes.
Water supply	Continuous water supply from. bore wells Adequate Water supply from over head tank and under ground sump.
Lifts	6 passenger Lifts of standard make is provided.

LOCATION



LANJIPALLI BYPASS, NH 59, BRAHMAPUR, ODISHA
CONTACT NO- 9040168033, 9437064556.

BUILDERS



Address-

Head office- Rajiv Nagar, 1st lane,
Behind Govt. ITI, Khodasingi, Brahmapur
Pin code: 760010
Branch office-
Behind Denabank,
Near khalikote college,
Opp. Saraswati plaza, Brahmapur .
Email- j.nageswar16@gmail.com
Website- www.silkcitygroup.in

ARCHITECTS

AR. ANKAN KUMAR BASA
MALUS INFRA, PLOT NO - 924/1,
GGP COLONY,
BHUBANESWAR-10